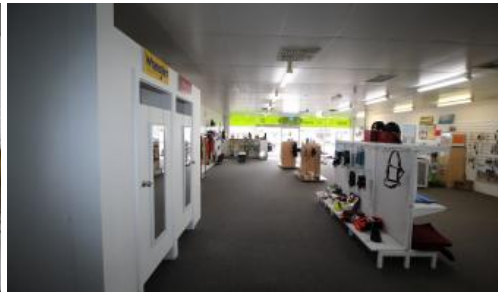


Leased



Unit 1, 909 Howitt St, Wendouree



Commercial Showroom with Excellent Exposure

Located on busy Howitt Street with large carpark at the front is this well presented showroom. Recently re-carpeted and painted with rear roller door access, kitchenette and amenities.

Floor area 278m². Resnt \$29,000.00 P.A. plus GST & Outgoings

The above information provided has been furnished to us by the vendor/s. We have not verified whether or not that information is accurate and do not have any belief in one way or the other in its accuracy. We do not accept any responsibility to any person for its accuracy and do no more than pass it on. All interested parties should make and rely upon their own inquiries in order to determine whether or not this information is in fact accurate.

278 m²

Price \$29,000 P.A. plus GST & Outgoings

Property Type Commercial

Property ID 896

Land Area 278 m²

Agent Details

Ross Titheridge - 0418 543 638

Office Details

Titheridge Real Estate
601 Sturt Street Ballarat VIC 3350
Australia
03 5332 2137

